

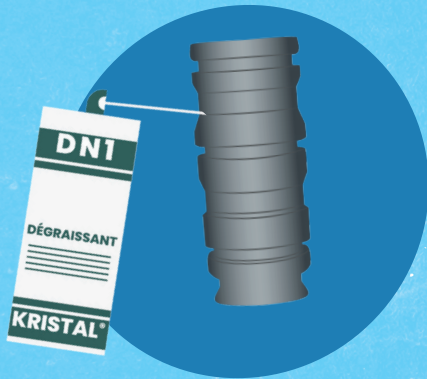
How to make a perfect impression!

With a **Malleable** product (M25, M60, M70 etc.)

1

Degrease the Part

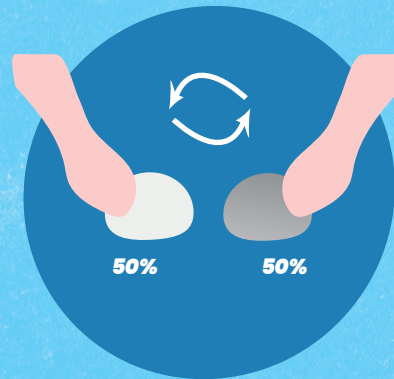
This is **mandatory**. Grease prevents polymerization and impairs precision.



2

Mix both components

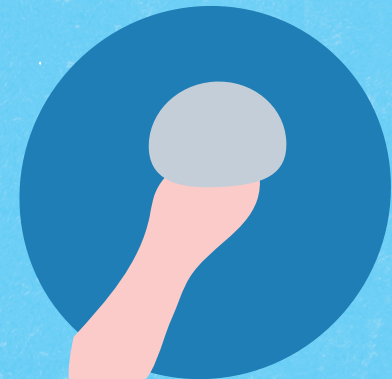
Mix both components in **equal amounts** until a homogeneous mixture is obtained.



3

Check the mix

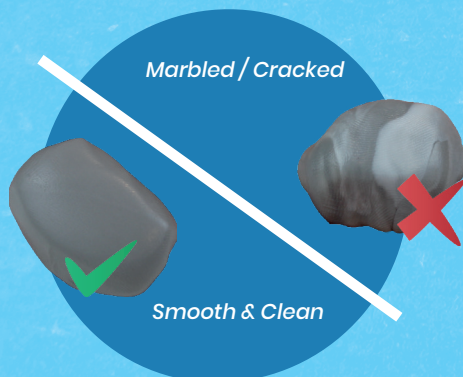
Your mixed plastiform should have a homogeneous color. Mixing should be completed in a short amount of time. (refer to the technical sheets)



4

Smooth the surface

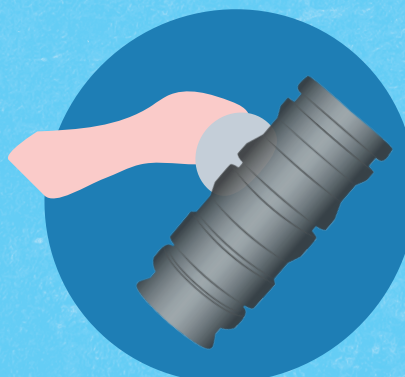
The surface of the plastiform ball must be flat and free of bumps (smooth and clean). The ball must not be marbled or cracked.



5

Apply quickly

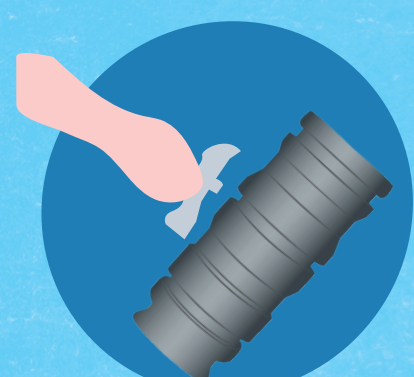
Curing begins as soon as mixing begins. Apply immediately by hand, pressing well to distribute the product.



6

Extract the Impression

The curing time is indicated on the pots. Make sure that the impression is fully polymerized before removing it!



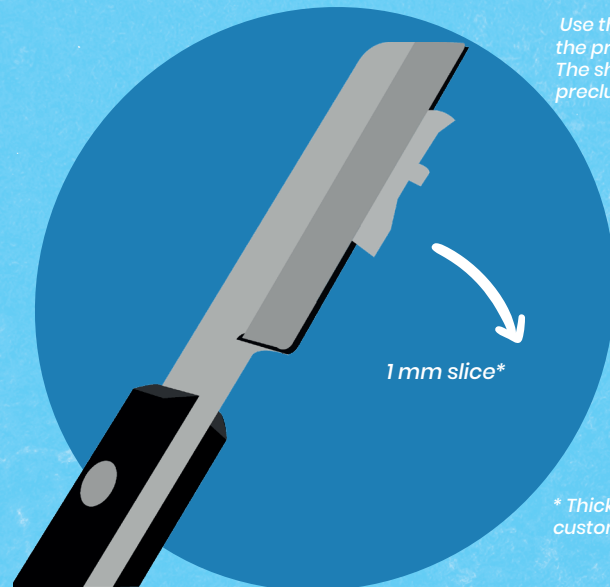
Next ...

The impression has a μm resolution !

7

Use the Double Blade Cutter *

Measuring the impression in 2 dimensions is sometimes much simpler.
Use the Double Blade Cutter to slice the impression in 2 dimensions without deforming it.



Use the technical data sheet to make sure the product can be used with the cutter.
The shape of the impression may also preclude its use.

* Thickness of the inter-blade is customizable.

8

Optical impression measurement

You can position the impression directly on a non-contact optical testing machine, such as a visio or profile projector.

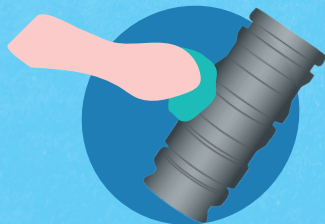


Available for sale

9

Little bonus tips!

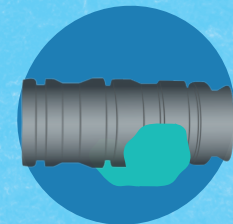
There are malleable plastiforms with a longer curing time (> 30 minutes).



Use an object to flatten the impression and facilitate its positioning on the cutting guide



The malleable products can also be used to create custom support bases for your parts.



Consult the complete instructions for use and the Technical Data Sheets before use!